

ISSUE 07

SUMMER 2025

DALLA TERRA

Wines – Spirits – Stories – Italy

IN THIS ISSUE



TASCANTE CONTRADE



CAMPAIGN FINANCED ACCORDING TO EU REG NO. 2021/2115



MINISTERO DELL'AGRICOLTURA
DELLA SOVRANITÀ ALIMENTARE
E DELLE FORESTE



WWW.DALLATERRA.COM



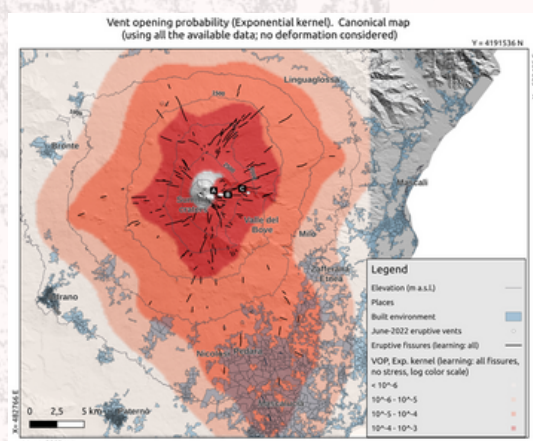
IN THIS ISSUE

The morning of Monday, 02 June carried with it a sharp reminder that Mt. Etna, which towers over the Sicilian city of Catania and its surrounding vineyards, villages, and beaches, is not asleep. At approximately 11am local time, the mountain released a billowing cloud of ash known as a pyroclastic flow as a section of volcano's caldera collapsed. Satellite images captured from space the orange glow of lava spilling down the deserted western slope from the mountain's crest. Groups of hikers and tourists retreated from the mountain for the day as it gurgled and churned. And yet, life continues here.

Every element of the landscape in eastern Sicily is influenced by Mt. Etna. Even on days when the mountain is quiet, remnants from its molten core appear everywhere. From the dark stone slabs that adorn doorframes and window sills, to porous cliffs that plunge into the crystalline Mediterranean, and the contrast of green vineyards against a carpet of black soil, it is a landscape colored by fire. Incredibly, this living, fire-breathing mountain is home to a wealth of communities and farms that have, for centuries, embraced the mercurial nature of the mountain rather than run from it.

Perhaps it is the liquid magma flowing just beneath the earth's crust here that bestows an intangible sense of tension energy on this place and its products. It is an energy that becomes real the moment you taste the wine from Mt. Etna. All of a sudden the smoke and ash of the singed landscape come alive in the glass amid waves of bracing acidity and, tart fruit, and vertical structure. It's no wonder these are considered to be some of the most exciting wines of modern Italy.

In this issue, Alberto Tasca will introduce the winery's newest project--a cru bottling of Etna Bianco, Dalla Terra's Rupert Billins will explore how the noble Tasca family of western Sicily became stewards of one of Etna's finest estates, and we will introduce the 2021 vintage of Tascante single-vineyard, contrada designated red wines.



CAMPAIGN FINANCED ACCORDING TO EU REG NO. 2021/2115



MINISTERO DELL'AGRICOLTURA
DELLA SOVRANITÀ ALIMENTARE
E DELLE FORESTE



DALLA TERRA

SCIARANUOVA BIANCO

A Letter from Alberto Tasca

On the Northern slope of Etna, the highest active volcano in Europe, between the districts of Montelaguardia and Passopisciaro, Sciaranuova is one of the four Contrade where we live and work. The Contrada extends for 14.40 hectares, 4.9 of which are devoted to vineyards and the remaining to chestnut groves. Here is where Tascante, our project on Etna, started in 2007 and also where, ten years later we decided to plant Carricante vines.

All of Sicily was once a home to the white Carricante variety, but its plantings on the island have declined precipitously as the local wine industry has modernized. The high slopes of Mount Etna, however, have remained one of the last bastions of Carricante on our sunny island. It was therefore a natural step for us to experiment with Carricante vines in our original Mount Etna vineyard.



We planted our Carricante on a deep and sandy soil, rich in organic matter. We then waited a few harvests for the vineyard to reach the right maturity and ensure that this variety could best express its potential. The 2022 vintage was when we found what we were looking for.

Having dedicated my life to the Sicily's unique patrimony of culture and terrain, it is a privilege to introduce Sciaranuova Etna Bianco DOC which vividly showcases the striking beauty and flavor of our island.

I sincerely hope you drinking enjoy this wine as much as I have enjoyed making it.



CAMPAIGN FINANCED ACCORDING TO EU REG NO. 2021/2115



MINISTERO DELL'AGRICOLTURA
DELLA SOVRANITA' ALIMENTARE
E DELLE FORESTE



DALLA TERRA

TASCANTE

The Tasca Family's Mt. Etna Estate



There was never a doubt that Sicily's most renowned producer of fine wine would situate themselves in the most renowned geography of Sicily. The arrival of Tasca d'Almerita to the volcano might seem to be like a member of the nobility joining the 49ers in the gold rush days of California. Yet the expertise and positive impact already imparted on Sicily's wine industry by the Tasca family shows that Tasca in Etna will be standing as long as the terraces and dry-stone walls that dominate the landscape.

With winemaking on Etna probably going back to the third century, it had peaked in the late nineteenth century with the large-scale production of bulk wine, before

ceasing in the mid-1900s, as evidenced by the number of abandoned palmenti (wine presses) in the area. In Sicily Latifundia-managed estates had been ubiquitous, but they were abolished by sweeping land reform mandating smaller farms from 1950-1962. Entire generations were forced to make a living elsewhere. Despite a DOC designation in 1968, the very first DOC in Sicily, the modern foundation story of Etna really starts in the late 1980's when the Benanti estate, brought on an oenologist named Salvo Foti to revive some of the family's forgotten vineyards. At that time on Mt. Etna there were less than 10 producers, many of whom were ripping up ancient vines to plant international varieties.



CAMPAIGN FINANCED ACCORDING TO EU REG NO. 2021/2115



MINISTERO DELL'AGRICOLTURA
DELLA SOVRANITÀ ALIMENTARE
E DELLE FORESTE



TASCANTE

The Tasca Family's Mt. Etna Estate

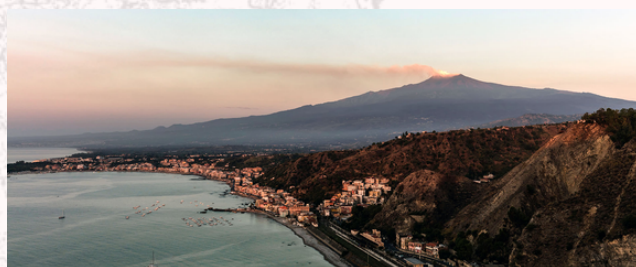


But Foti, who grew up on Etna, sought to restore the region's ancient vineyards, eventually making wine for Benanti and a number of other producers on the eastern and southeastern flanks of the mountain.

In the early 2000s a wave of inspired trailblazers arrived on the largely deserted northern slopes, long considered the origin of Nerello Mascalese. From this starting point, in the last twenty or so years the population of all Etna producers, with a greater concentration in the north, has grown to 441 producers farming over 1,291 ha (3,190 acres).

Alberto Tasca arrived as one of these trailblazers and began the search for his ideal vineyard sites on the slopes of this still active volcano as early as 2002. While searching for the ideal parcels, Alberto initiated a series of experimental vinifications in 2004 made from purchased grapes. In 2007, the Tasca family acquired land in the spectacular sites of Contrada Sciaranuova and Contrada Pianodario, but without a brick-and-mortar winery on the estate the resulting wines could only qualify for Sicilia DOC status.

Finally, Contrada Rampante was added in 2015 and by 2016 the property housed its own winery set on the main road about 1 km east from the town of Passopisciaro. This important investment, which came with vines planted in the year 2000, meant that the Tasca family were now able to use the Etna DOC and so was born the Tascante (*Tasca + Etna* in reverse) brand.



DALLA TERRA

CONTRADE OF TASCANTE

The New Releases



CAMPAIGN FINANCED ACCORDING TO EU REG NO. 2021/2115



MINISTERO DELL'AGRICOLTURA
DELLA SOVRANITÀ ALIMENTARE
E DELLE FORESTE



DALLA TERRA

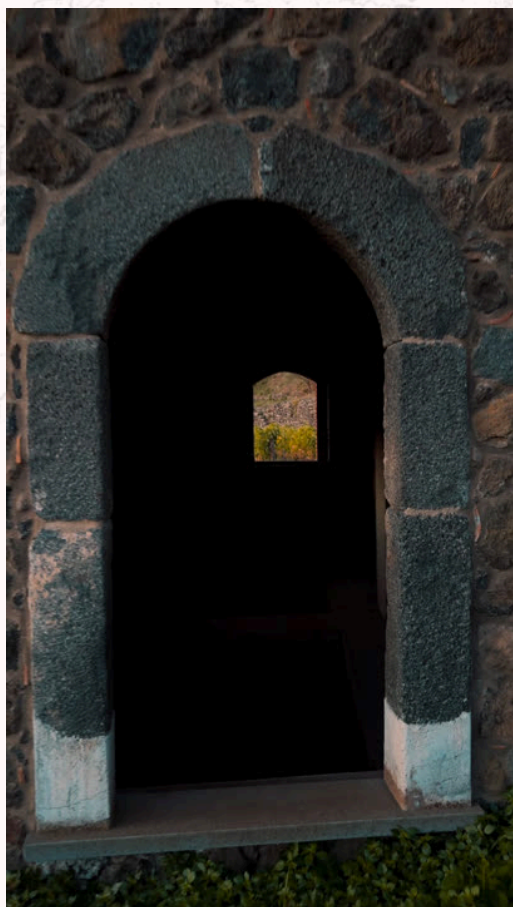
SCIARANUOVA BIANCO

The 2022 Vintage

While **Carricante** used to be found throughout the island of Sicily, it is now essentially confined to Mount Etna, where it accounts for 95% of the wine grapes grown here. In 2017, the Tasca family planted a single vineyard to this traditional Etnean variety within a walled clos of the contrada Sciaranuova some 730 meters above sea level. This small plot, planted with a density of 5,000 vines / ha, was the source of a series of experimental fermentations until the arrival of the 2022 harvest when the family found what they had been looking for.



Watch the film



In the Vineyard:

The 2022 vintage was characterized by a cool spring with sporadic rains, followed by a very hot summer. The August rains and high temperatures in September ensured the complete ripening of Carricante. The first half of October, with its limited rainfall, allowed for a delayed harvest, enhancing the aromatic complexity of the grapes. The grapes were pressed and fermented in a single 25 hl Slavonian oak cask, at a controlled temperature.

Only 2,750 bottles have been produced.

In the Glass:

On the nose, a delicate aroma of toasted hazelnut is accompanied by fresh flowers and Mediterranean herbs. On the palate, citrus – such as lemon, tangerine and bergamot, meld with a flinty minerality reminiscent of gun smoke. This is a wine whose presence and complexity continues to build long after the glass was poured. The naturally high acidity of Carricante finds compliment in the wine's supple mouthfeel and lingering finish.



CAMPAIGN FINANCED ACCORDING TO EU REG NO. 2021/2115



MINISTERO DELL'AGRICOLTURA
DELLA SOVRANITÀ ALIMENTARE
E DELLE FORESTE

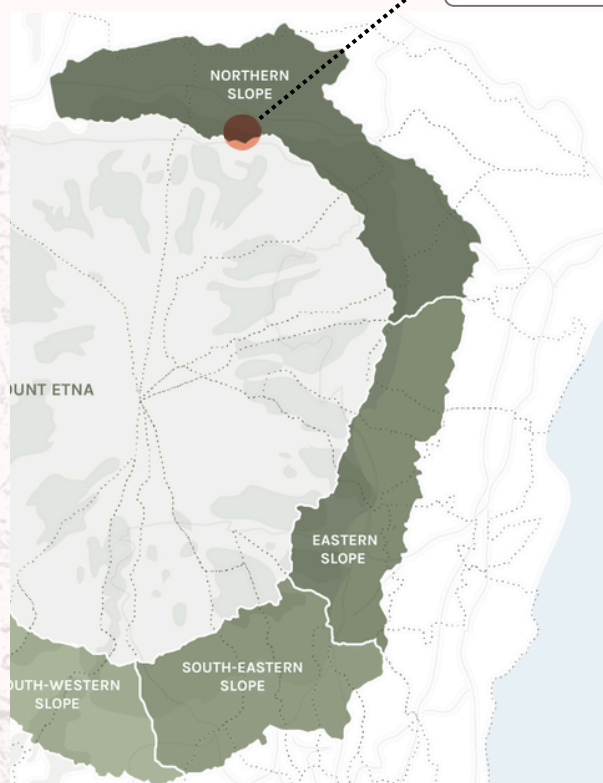


DALLA TERRA

RAMPANTE

The 2021 Vintage

At 740 meters in elevation, Rampante spans a section of Mount Etna where the volcanic soils are deeper and marked by visible basalt outcrops. These conditions encourage vertical root growth and lend vigor to the vines, which produce slightly larger clusters and wines of bold structure. Rampante is the most assertive and “Etnean” of the three Tascante crus—floral, direct, and driven.



CONTRADA RAMPANTE
Volcanic origin of different lithological characterization, but of the same time period (between 15 thousand and 4 thousand years).

In the Vineyard:

The 2021 vintage was warm and dry, but the vineyard's soil depth ensured excellent water retention. The vines maintained balance throughout the season, and harvest took place on October 9th. The wine opens with lifted aromas of violet and wisteria, layered with delicate spice and a subtle volcanic smokiness. On the palate, Rampante 2021 shows energy and precision: firm, vibrant tannins, a fresh and mineral core, and a long, persistent finish.

In the Glass:

The wine opens with lifted aromas of violet and wisteria, layered with delicate spice and a subtle volcanic smokiness. On the palate, Rampante 2021 shows energy and precision: firm, vibrant tannins, a fresh and mineral core, and a long, persistent finish.



CAMPAIGN FINANCED ACCORDING TO EU REG NO. 2021/2115



MINISTERO DELL'AGRICOLTURA
DELLA SOVRANITÀ ALIMENTARE
E DELLE FORESTE



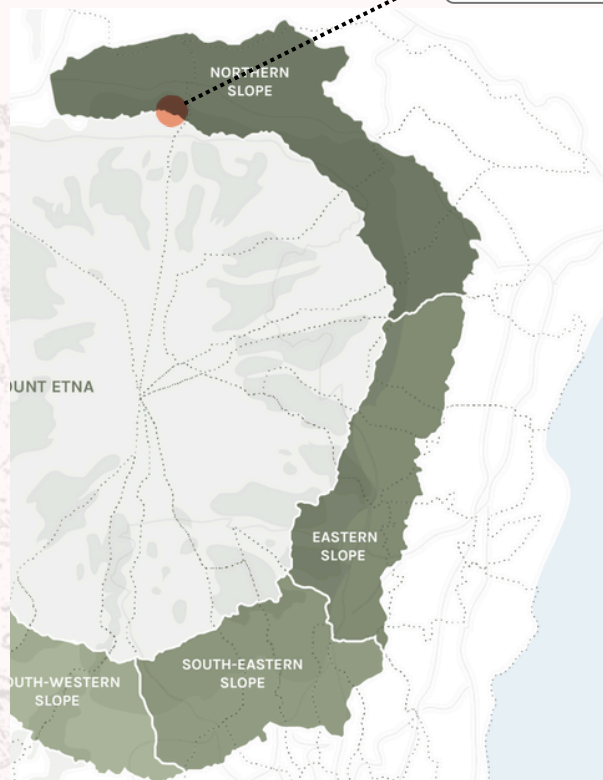
DALLA TERRA

SCIARANUOVA

The 2021 Vintage

Located at around 730 meters above sea level and bordered by woodland, Contrada Sciaranuova sits on medium-textured volcanic soils that strike a natural balance between structure and fertility. Among the Tascante crus, it is the most even in terms of vine vigor and soil composition—qualities that enable it to retain both freshness and complexity, even in warmer vintages. In 2021, despite prolonged heat and drought, the surrounding forest and deep-rooted vines allowed for steady, complete ripening.

CONTRADA SCIARANUOVA
Volcanic formations that are between 40,000 and 4,000 years old.



In the Vineyard:

Harvested on October 11th, the grapes were in excellent condition, with ideal phenolic development. The resulting wine reveals immediate depth and layering.

In the Glass:

Sciaranuova is the most textural of the three crus. Aromas of dark flowers, underbrush, and finely-tuned spice rise from the glass, supported by subtle oak integration. On the palate, the tannins are firm yet polished, energized by fresh acidity and a long, velvety finish.



CAMPAIGN FINANCED ACCORDING TO EU REG NO. 2021/2115



MINISTERO DELL'AGRICOLTURA
DELLA SOVRANITÀ ALIMENTARE
E DELLE FORESTE



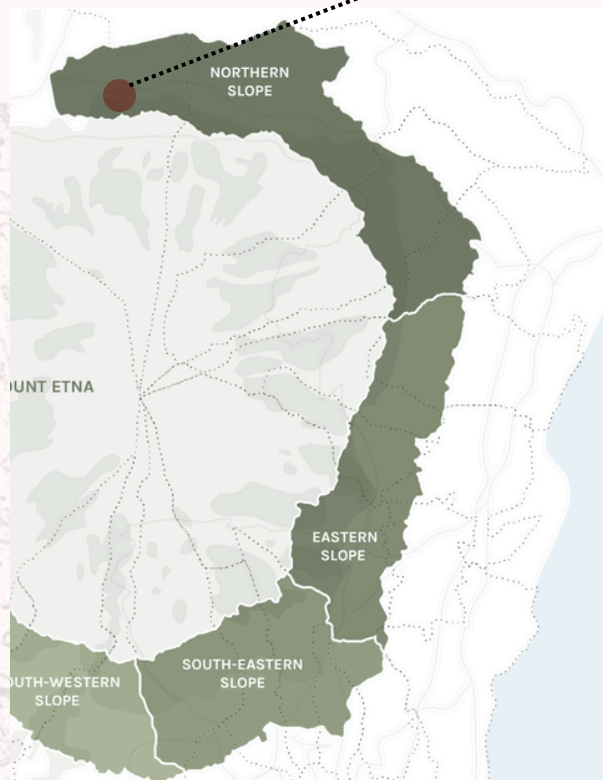
DALLA TERRA

PIANODARIO

The 2021 Vintage

At 775 meters above sea level on the northern slopes of Mount Etna, Contrada Pianodario is the highest of the Tascante crus. The soils here are shallow and strewn with small fragments of volcanic rock, naturally limiting vigor and yield. The vineyard's altitude ensures a cooler microclimate and a slow, balanced ripening process. In warmer years such as 2021, this restraint translates into wines of purity and composure, where austerity meets clarity of expression.

CONTRADA PIANODARIO
Lands that are between 15,000 and 4,000 years old on much older land (40,000-30,000 years).



In the Vineyard:

The 2021 vintage was marked by a long, dry summer, but ripening advanced steadily and without excess. The vines remained physiologically balanced, and harvest took place on October 22nd with healthy grapes showing excellent concentration and integrity.

In the Glass:

The nose of Pianodario is all Etna: violet, allspice, smoked herbs and blood orange over a core of sour cherry and cracked pepper. It is the most essential and linear of the three Tascante crus, and therein lies its strength: a wine of focus and restraint, shaped by altitude and stone.



CAMPAIGN FINANCED ACCORDING TO EU REG NO. 2021/2115



MINISTERO DELL'AGRICOLTURA
DELLA SOVRANITÀ ALIMENTARE
E DELLE FORESTE





DALLA TERRA

WINERY DIRECT

85 Sheehy Court
Napa, California 94558
www.dallaterra.com

[Join our Mailing List](#)